

Mitsubishi hoist

Sales & Service

N o . 855-0250

Notice of CPU boards Change(200 V class: 7.5ton / 10ton Traversing type inverter,TIB-2.2 (S) and over)

Thank you for selecting a Mitsubishi hoist and related products.

This letter is to notify the CPU boards change(200 V class: 7.5ton / 10ton Traversing type inverter, TIB-2.2(S)and over)

1. Changed Contents

CPU boards are changed

2. Subjects

①Subject Models: 200 V class U2-7.5ton/10ton Traversing type inverter hoists
200 V class TIB-2.2(S)~TIB-30

②Subject Parts:

Part Code	Part Name	Ex Administration NO	New Administration No	Applicable model
03G54R	CPU board	PF55098G01	PA00312G01	Traversing type inverter (200 V class: 7.5ton/10ton)
03G543	CPU board	P647575G01	PA00312G01	TIB-2.2(S) and over

3. Schedule for Changes

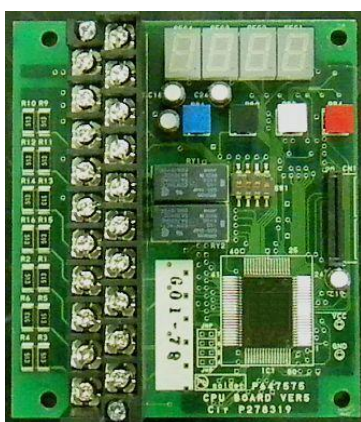
The changes are applied to the products which are produced from Aug, 2013.

4. Reasons for Changes

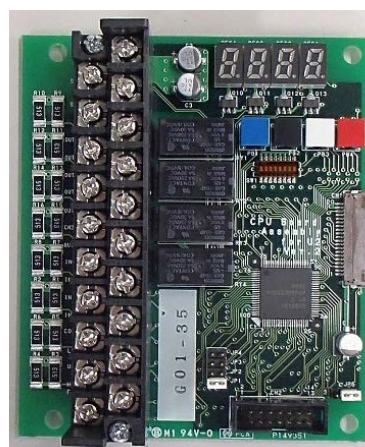
For the improvement in the function and the quality.

5. Changes and Note of Cautions

- (1) The function of external output signal selection mode is included as standard.
 - (2) It is possible that to set the frequency per 0.1Hz when the frequency is 10Hz and under.
 - (3) The improved sinusoidal modulus makes low acoustic noise.
 - (4) Refer to the page 2 in this book and the Instruction Manual about details and setting of additional functions.
- ※Only standard software products are changed. Please direct the enquiries to us about particular kind of software.



【Existing Product】

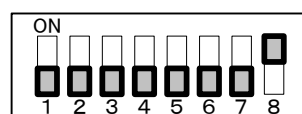
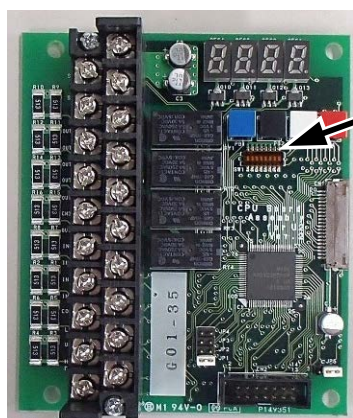


【Switching Product】

Subject	【Drawing Product】		【Drawing Product】	
	Date of issue	July 12, 2013		Notified to
	Notice of CPU boards change (200V class TIB-2.2(S) and over, 7.5ton/10ton Traversing Type Inverter)	MITSUBISHI ELECTRIC FA INDUSTRIAL PRODUCTS CORPORARION 1-1-1 Imajuku-Higashi, Nishi-ku,Fukuoka 819-0192 TEL.092-805-3400		Sales agent

Model Selector Switch

Replacing a board need to set the Model selector switch. Ensure that all power is cut off status and the LED display is extinction when setting the Model switch. (Refer to the following table)



Model Selector Switch

(←Example of TIB2.2kw)

The List of Model selector Switch

Model	Setting
U2-7.5ton,10ton Traversing	0000 0001
TIB-2.2kW	0000 0001
TIB-4.4kW	0000 0010
TIB-7.4kW	0000 0011
TIB-11kW	0000 0100
TIB-15~30kW	0000 0101

(0:OFF 1:ON)

Terminal Name and Output Terminal

There are differences between the new boards and the former boards about the terminal name and the output terminal. Ensure that a wire is rewired as needed when replacing a board.

