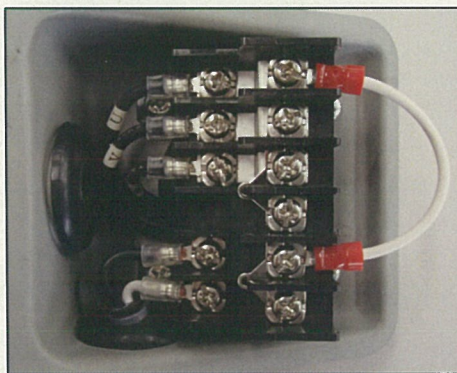


Notice of power-supply device for brake change (Saddle and Gear motor for crane saddle(SGM))

Thank you for selecting a Mitsubishi hoist and related products. This letter is to notify the power-supply device for brake change(Saddle and Gear motor for crane saddle(SGM)).

1. Subject Models
 - Saddle for crane : ST,SP series all models (excluding splash-proof type)
 - Gear motor for crane saddle(SGM) : SGM-A type all models(excluding Splash-proof type and Explosion-proof type)
2. Schedule for Change
 - The change is carried out from the acceptance of orders in May, 2013.
3. Changed Contents
 - The terminal box is placed in Saddle and SGM which were not previously equipped with the terminal box. And the terminal block with a built-in power-supply device for brake is placed in the terminal box of Saddle and SGM which were equipped with terminal box. These improved the workability for wiring and ease of maintenance.
※Please refer to the instruction manual for specific wiring method.



After changed the terminal block with a built-in power-supply device for brake

4. Reason for change
 - To improve the workability for wiring TIB(Inverter control box for saddle motor)
 - To comply with RoHs
5. Compatibility
 - Main body: Compatible
 - Motor frame: Compatible(Excluding ST,SP-0.2,0.4)
 - Power-supply device: Incompatible
(Please check the model name and the serial number before ordering the parts.)
6. Other
 - The improvement of visibility of the nameplate by changing the layout and character size of nameplate.
(The material of nameplate is also changed for some models)

SUBJECT	Notice of power-supply device change for brake (Saddle・SGM)	Date of issue	Apr 15, 2013	Notified to
		MITSUBISHI ELECTRIC FA INDUSTRIAL PRODUCTS CORPORATION 1-1-1 Imajuku-Higashi, Nishi-ku, Fukuoka 819-0192 TEL 092-805-3400		Sales agent

MITSUBISHI

Sales & service

No. 855-0248

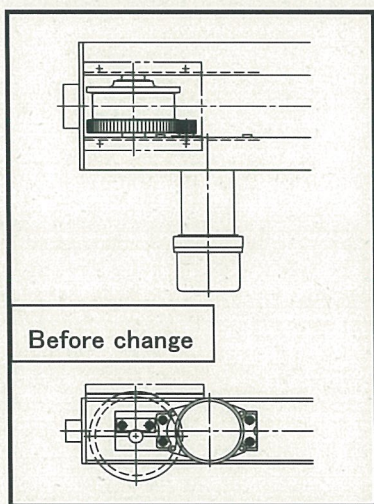
• The list of existing and new model name

Model	Existing model name	New model name	Change in outline drawing
SGM	SGM-0.4A-HK2	SGM-0.4A-HK3	○
	SGM-0.4A-LK2	SGM-0.4A-LK3	
	SGM-0.75A-HK2	SGM-0.75A-HK3	
	SGM-0.75A-LK2	SGM-0.75A-LK3	
	SGM-1.5A-HK2	SGM-1.5A-HK3	
	SGM-1.5A-LK2	SGM-1.5A-LK3	
	SGM-2.2A-HK	SGM-2.2A-HK2	
	SGM-2.2A-LK	SGM-2.2A-LK2	
	SGM-3.7A-LK2	SGM-3.7A-LK3	
Saddle	SP-0.2D3	SP-0.2D4	●
	SP-0.4D3	SP-0.4D4	
	ST-0.2D3	ST-0.2D4	
	ST-0.4D3	ST-0.4D4	
	ST-0.4D3-U	ST-0.4D4-U	
	ST-0.4D3-UW	ST-0.4D4-UW	
	ST-0.4D4-L	ST-0.4D5-L	○
	ST-0.75D3	ST-0.75D4	
	ST-0.75D3-L	ST-0.75D4-L	
	ST-0.75D3-U	ST-0.75D4-U	
	ST-0.75D3-UW	ST-0.75D4-UW	
	ST-0.75D3-W	ST-0.75D4-W	
	ST-2.2D-W	ST-2.2D2-W	

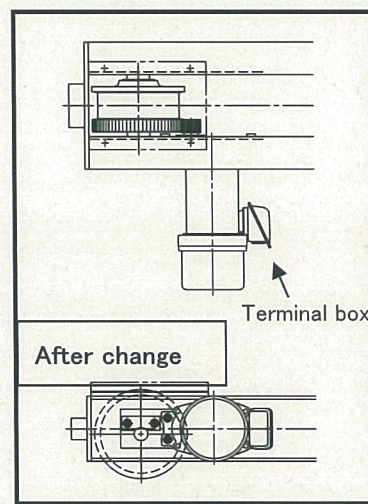
※○=No change ●=Changed.

• Referential example for a change in outline drawing

(The terminal box is attached for the models which were not previously equipped with terminal box.
please refer to the catalogue for details)



ST-0.4D3



ST-0.4D4

SUBJECT	Notice of power-supply device change for brake (Saddle・SGM)	Date of issue	Apr 15, 2013	Notified to
		MITSUBISHI ELECTRIC FA INDUSTRIAL PRODUCTS CORPORATION 1-1-1 Imajuku-Higashi, Nishi-ku, Fukuoka 819-0192 TEL 092-805-3400		Sales agent